

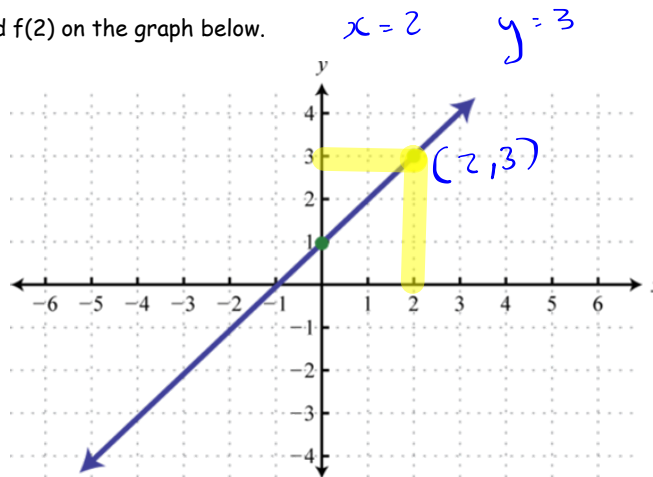
Introduction to Functions

Reading Graphs

When asked to find a value on a graph, and show work - use a highlighter.

Let's do an example together.

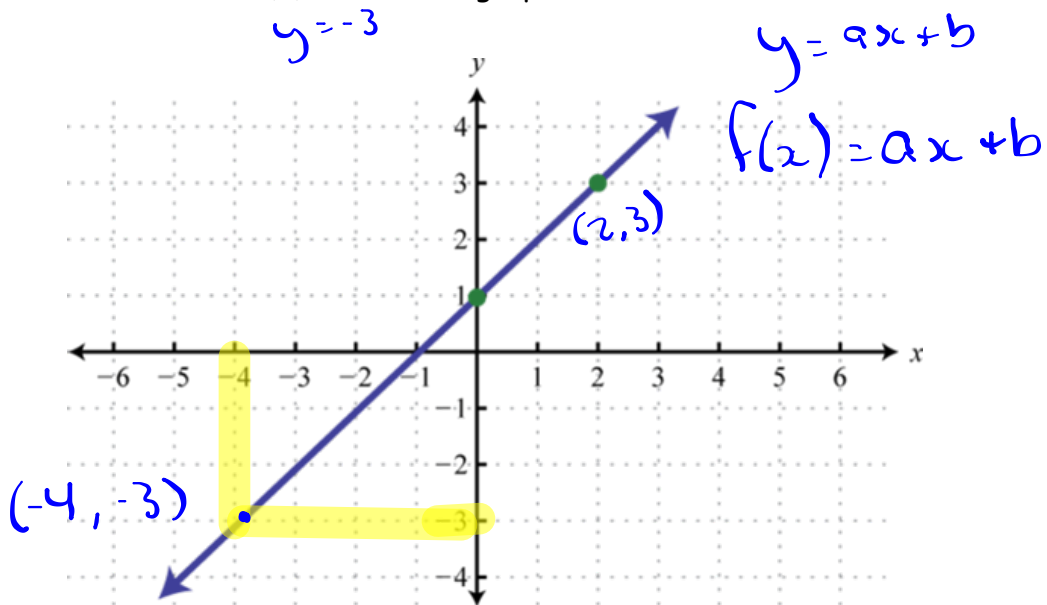
Ex. Find  $f(2)$  on the graph below.



A) When asked to find  $f(2)$  you must find when  $x = 2$ , and show that at that point  $y = 3$

Dec 13-9:39 AM

Ex. What is  $x$  when  $f(x) = -3$  on the graph below.



B) When asked to find the value of  $x$  when  $y = -3$ , show that  $x = -4$

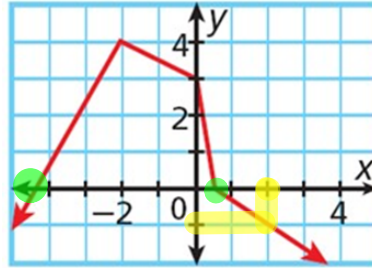
Dec 13-9:41 AM

Solve the following problems using a highlighter. Then write your answer.

1. Find  $f(2)$  :

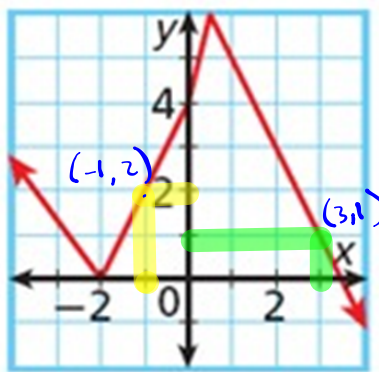
$x = 2$

$f(x) = 0 = y$        $y = -1$



2. Find  $f(-1)$ :

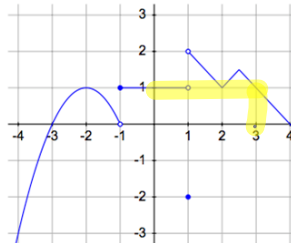
$y = 2$



Dec 13-9:43 AM

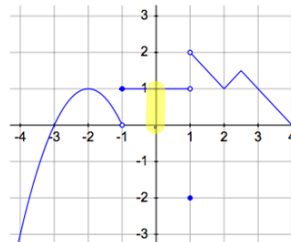
3. Find  $f(3)$ :

$y = 1$



4. Find  $f(0)$ :

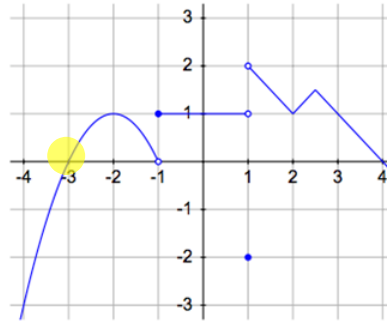
$y = 1$



Dec 13-9:49 AM

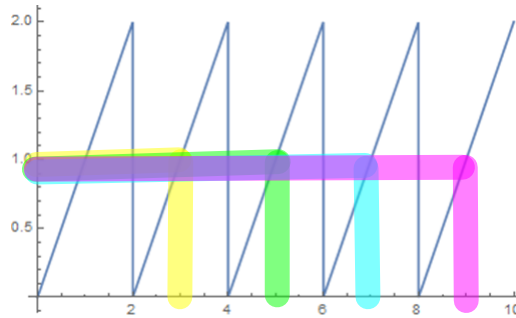
5. Find  $f(-3)$

$y = 0$



6. Find  $f(3)$ :

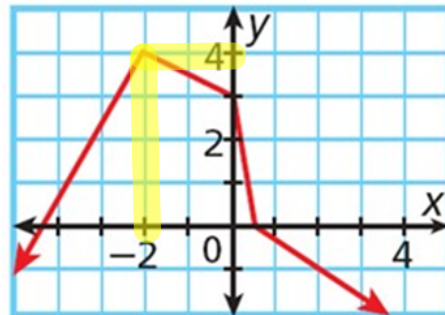
$y = 1$



Dec 13-9:52 AM

7. Find  $x$  when  $y = 4$

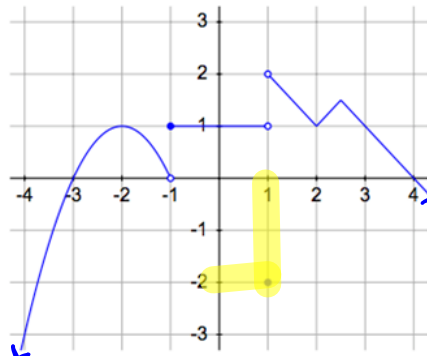
$x = -2$



8. Find  $x$  when  $y = -2$  ~~2~~ ~~7~~

$f(1) = -2$

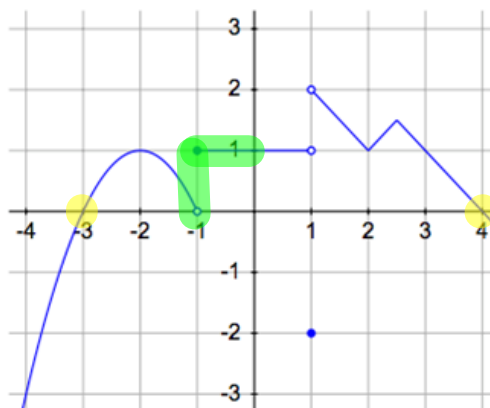
$y = 0$   $x =$  \_\_\_\_\_



Dec 13-9:52 AM

9. Find  $x$  when  $y = 0$   
(there are 2 answers)

$$x = \underline{-3}, \underline{4}$$



Bonus Question:

Why doesn't  $x = -1$  when  $y = 0$ ?  $f(-1)$

Explain:

Dec 13-9:52 AM