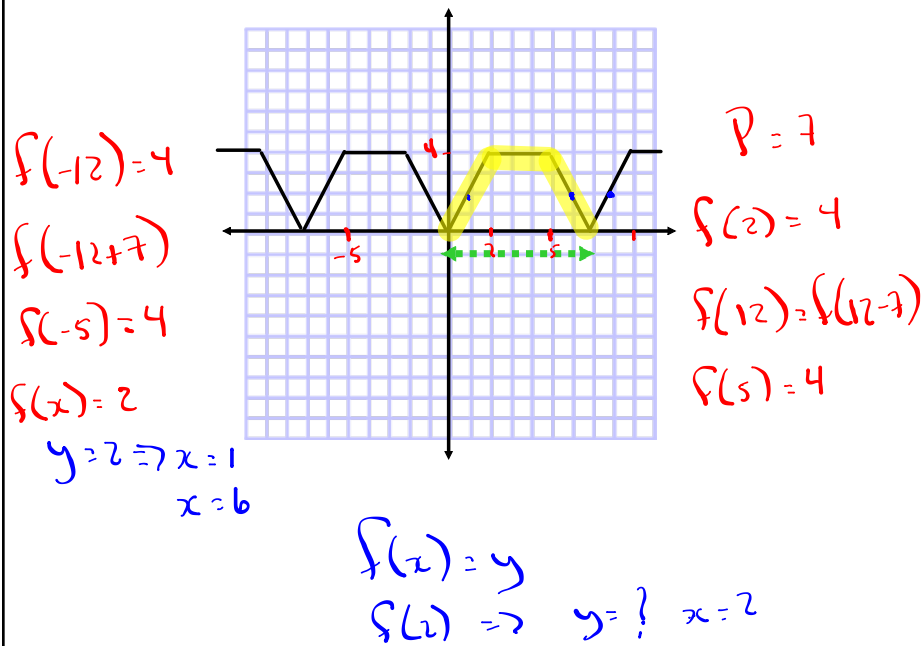


# Periodic Functions

Look for a repeating pattern

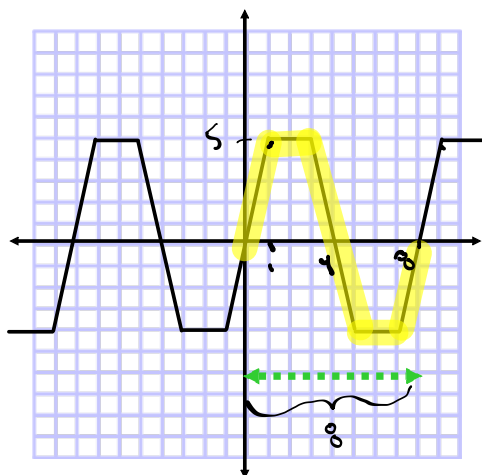


May 10-11:44 AM

You need to know how to:

- "read" the function and predict values
- find the **period** (ie the width of **ONE repeating pattern**.)

Ex. What is the period of the function  $f(x)$  below?  $P = 8$



Find:  $f(1) = 5$

$f(9) = 5$

$f(25) = 5$

$$25 - 8 = 17 - 8 = 9 - 8 = 1$$

May 10-11:52 AM